



# LEITRIM ASSOCIATION OF PEOPLE WITH DISABILITIES



In memory of  
the late  
Sr. EMMANUEL FARRELLY (Aughavon)  
and HOWARD CUSACK (Ballinamore)  
whose vision and dedication  
inspired People with Disabilities  
to live fulfilled lives as  
equal members of  
society

Leitrim Association  
of  
People with Disabilities (LAPWD)  
Officially  
Identified  
by M...  
May 5th



## 2022 ANNUAL REPORT



Full Copy of Audited accounts and Membership form for 2023 are at the back of this report

# Table of Contents

Chairpersons Report	_____	<b>02</b>
Managers Report	_____	<b>03</b>
The Inception of LAPWD	_____	<b>05</b>
HSE Service Level Agreement	_____	<b>08</b>
Strategy and Performance	_____	<b>08</b>
Finances & Annual Audited Accounts.	_____	<b>09</b>
Donations	_____	<b>11</b>
Staff	_____	<b>12</b>
Media and PR	_____	<b>15</b>
Community Physiotherapy	_____	<b>15</b>
Accessible Transport	_____	<b>16</b>
Funding Applications	_____	<b>17</b>
Make Way Day	_____	<b>19</b>
Climb with Charlie	_____	<b>20</b>
County Market/Leitrim GAA	_____	<b>20</b>
LAPWD RUN WALK & ROLL 2022	_____	<b>21</b>
Eamonn McGowans Solo Leitrim Cycle	_____	<b>22</b>
Employment Support Project	_____	<b>24</b>
Christmas Hampers	_____	<b>25</b>
Membership/Networking	_____	<b>26</b>
Conclusion	_____	<b>27</b>

# Chairperson's Report

## Ita Reynolds Flynn



Dear Friends,

Welcome to the Annual Report for 2022.

In 2022 the Association has continued to provide a number of specific aims and objectives, namely : to provide a personal assistant service for people with disabilities to live and work independently in their own community and to facilitate the raising of disability issues at local and national level. Over the years, we have built a strong reputation for delivering quality support for disabled people all over county Leitrim, with our Leaders at the core of our service. We share long-term relationships with all our Leaders, staff, stakeholders and all members of our community.

We continue with our person centred approach, supporting people with personal assistant services, transport needs and advocating on all issues related to disability. Our company's progress is the outcome of the hard work of our team both here in our Action Ability Centre in Mohill and in the wider community, headed by our Manager Karen McPartland, their commitment and dedication are second to none.

On behalf of the board, I would like to acknowledge the efforts made by all at LAPWD, to ensure that we continue to meet the needs of those we serve. I would like to acknowledge the commitment of the Board Members; their willingness to devote their time and their dedication to the organisation .

I would also like to thank all the staff whose enthusiasm and work ethic ensure that we continue to provide quality support to our Leaders.

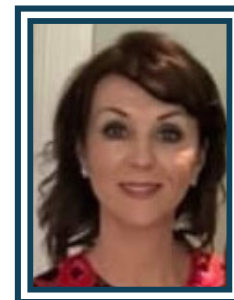
I wish all the best to all our service users and staff, management, and members of the board in the year ahead. To members and families who had bereavements during the year, we offer our sympathy on the loss of your loved ones.

Yours Sincerely,

*Ita Reynolds Flynn*

# Managers's Report

## Karen McPartland



Dear Members,

As always, with this LAPWD Annual Report ,we hope to provide a comprehensive account on our company's activities throughout the preceding year. With this report we aim to give our Leaders and their families, our staff members and our funding agencies and other interested people, an overview of the work of the company in 2022, information about the company's activities as well as providing full details of our financial position.

The core business of LAPWD is the delivery of a quality personal assistant services to our Leaders across all areas of County Leitrim and West Cavan.

The specific needs of our Leaders is a priority and we make every effort to deliver the Personal Assistant service to match those needs.

In 2022 we provided 22,119 home support hours, through our Service Level Agreement (SLA) with the HSE Physical and Sensory Department in JFK House in Sligo .

In addition to this, we provided 19,794 hours through Learning Disability Services. The majority of these hours are the result of an intensive support package for an individual in the North Leitrim /West Cavan area

Our Bus service was very busy in 2022. Our accessible vehicle bus service completed nearly 200 journeys, 70% of the trips were for medical appointments in Galway, Sligo and Dublin. The remaining 30% were supporting people with disabilities to access social and other events. We also provide services in conjunction with St Ciaran's, Northwest Parents and Friends, in Carrick on Shannon, where we support a service user with their transport needs every weekday evening. This due to continue until July 2023.

Over the course of 2022, we had many successful applications for funding through the Leitrim County Council ,ETB and Creative Ireland ,which enabled us to run classes in the Action Ability Centre, including gardening and yoga.

We also received a substantial grant of €12,675.13 through the Department of Rural and Community Development. This funding will be put towards our new front and back doors to improve the energy efficiency of the building

# Managers's Report

## Karen McPartland



Donations: we would like to sincerely thank Tony and Bernadette McGovern, of McGovern Brothers (Haulage) Ltd, for their generous donation of £2,000 again this year.

We were also contacted by a donor who donated €7,000 to LAPWD, he wished to remain an anonymous donor .He would like it acknowledged , that the donation was from an expatriate with a deep love for his native Leitrim and the people of Leitrim. This was an extremely generous gesture, in which we are very appreciative.

The Rural Social Scheme (RSS) continues to provide us with much needed supports from office administration, reception, and garden maintenance. Many thanks to the Leitrim Development Company and John Charles, RSS supervisor for their continued support.

I want to acknowledge the ongoing support of the Disability Manager, and all the staff of the Physical and Sensory Dept. of the HSE in Sligo. Throughout every year we continue work closely with a range of community health professionals and it is important that we acknowledge this good, shared working relationship.

I wish to thank the Board and particularly the Officers of the Board, for their commitment to the future of LAPWD .I would also like to express my sincere thanks to our Chairperson Ita Reynolds Flynn for the commitment of her time and support to the whole team throughout the year.

Finally, I am honoured to continue leading the team of staff here at LAPWD and I sincerely thank them for their continued flexibility, commitment and service ,which as always has been exceptional. The Personal Assistants working in the community, are without doubt, some of the most dedicated, kind and hardworking colleagues I have ever had. To the Team here in the office ,Bernie, Emer, Gary ,Nikki, and Theresa, thank you for all your hard work and for making our working environment one that is so supportive and enjoyable.

Thank you for your interest and commitment on taking the time to read this report of our activities, services and developments of our past year in LAPWD.

Yours Sincerely,



# The Inception of LAPWD Honorary President Andy McGovern



It's amazing how a disability or illness can be the ignition to lead a person on a path that they would never otherwise dream of taking, had they been an able-bodied person.

In 1990, a young enthusiastic lady was the Principal teacher at Marian College, Mohill, Co Leitrim. Her professional name was Sister Emmanuel Farrelly, better known to me as Patsy Farrelly from Aughavas Co Leitrim. She was a wonderful teacher, taking great delight in working with teenage children as she taught, advised, and prepared them to take on the world.

Sadly, she began to experience health problems, and after numerous hospital visits, she was finally diagnosed with Multiple Sclerosis. A severe blow, which Patsy gracefully accepted as she continued her teaching vocation. Patsy's health continued to deteriorate, eventually leaving her with no option only resign and abandon her much-loved profession. Patsy was a person of courage and conviction. Finding herself at a crossroads, she chose not to travel the road of self-pity or the 'why me syndrome'. Patsy had a dream, a vision. She would start an organisation which would represent and support disabled people and stick people in Leitrim and further afield.

On the 8th May, 1996 the first group of people came together. United in strength, cemented by their disabilities they were filled with enthusiasm. Mr Martin Naughton, a well-known National Disability Activist gave the keynote address at the meeting. Many meetings followed throughout the year 1996, as much information was gathered from various organisations. On May 8th 1997, a new Association was born, LAPWD - Leitrim People with Disabilities. The official launch was performed by Mr Mervyn Taylor, the then Minister for Equality and Law reform. It was a wonderful achievement, just one year to the day since our first meeting. LAPWD was now a Company, an Employer, and a registered Charity. It was my privilege to be there, witnessing its birth. Our goal was to employ PAs (Personal Assistants) to send into the homes of disabled people in Leitrim and West Cavan. Together we worked relentlessly to restore, what rightfully was our entitlement -to live independently in our own homes.

# The Inception of LAPWD Honorary President Andy McGovern



Sadly, Sister Emmanuel's health continued to deteriorate due to the MS. She was eventually confined to a nursing home. We were then forced to carry on without her. But we were fuelled by her great courage, determined to carry her torch, to witness her dreams being fulfilled.

A small rented room at the top of the town of Mohill was our meeting place. The room soon became congested, committee members were often frustrated, and many of us agreed to disagree as we ploughed on in a difficult environment. The appointment of Rosaleen Kielty as a manager was a turning point for the committee. Immediately she saw our dilemma, she viewed disabled people trying to operate computers in a confined space. Taking courageous bold steps, she set about purchasing a new site for the LAPWD centre.

The official opening of the Action Ability Centre was on 8th May, 2008. It was a landmark event in the history of LAPWD. It was opened by the President of Ireland, Mary McAleese and her husband Dr Martin McAleese. The opening of the centre drew a huge attendance of members and representatives from the local community. In 2018, Rosaleen Kielty retired and a new manager was appointed – Karen McPartland. She managed the successful running of the association with great ease and composure. Then she met an obstacle which no other manager had ever had to contend with before – the Coronavirus. We can only try to imagine the challenges she faced, being responsible for over fifty P.A.'s. Trying to avoid them catching the virus, and keeping safe the people whose homes they were visiting. A heavy responsibility fell on Karen's shoulders as she strived to protect the Leaders, staff, workers, bus drivers and herself, while still maintaining our vital service. Today our Association is on a firm footing thanks to our wonderful team - Our Manager, Directors, Board of Management, Chairperson, staff, workers, bus drivers, PA's and leaders. It is very important that we continue to promote our association and to encourage disabled people to join our association, so that they too may benefit from our services. Any association is only as strong as its last recruited member.



# The Inception of LAPWD Honorary President Andy McGovern



Finally, I am proud to have contributed in a small way to this association over the past 27 years. I am privileged to have worked with many wonderful people who had the courage to travel unknown roads, firmly focused on reaching our common goals. I pay tribute to the many people throughout the years who supported us, believed in us, and took brave steps with us, as they placed their trust in our integrity. This beautiful centre now stands as a monument to their loyalty and support.

Finally, on a personal level, I would like to express my thanks to you for your kindness to me on the occasion of my recent 90th birthday. Thank you for the video of my involvement in the association, and for the beautiful picture, cards and gifts. I hold a special place in this old ninety-year-old heart of mine for you all.

Andy ~



90 on the clock but young at heart Andy McGovern Pictured above with the LAPWD Board of Directors and Staff 2023

# HSE Service Level Agreement



Feidhmeannacht na Seirbhíse Sláinte  
Health Service Executive

LAPWD are funded under Section 39 of the 2004 Health Act to deliver a Personal Assistant service. Section 39 bodies related to agencies / groups undertaking services which are similar or ancillary to those of the HSE and to whom the HSE is providing grant aid to do so.

All organisations are required to sign a service level agreement which is a contract between the HSE and agency to deliver a service that complies with all relevant standards and legislation.

## Strategy and Performance



Our key service remains the delivery of a quality personal assistant service to allow our Leaders live independent lives.

Each year we are approved a contract of funding by the HSE to deliver a specific number of hours to an approved number of Leaders. This report covers the period January to December 2022 (52 weeks)

Each month we provide a report to the HSE on the hours delivered through a key performance indicator template. On a quarterly basis we report to the HSE on the financial expenditure to support the information provided in the Key performance indicators. The information taken together in the financial and activity based reports, provides robust monitoring and transparent details on the activities of LAPWD.

# Finances and Annual Audited Accounts.

Copies of the annual audited accounts for the period January to December 2022 form part of this report and the accounts demonstrate that the company is in a healthy state financially. We continue to manage our finances prudently and make savings and efficiencies where possible.

The annual average rate of inflation in 2022 was +7.8%. This compares to an increase of +2.4% for 2021 and a decrease of 0.3% for 2020. The largest year-on-year price increase was recorded in October 2022 when prices rose by 9.2% compared with the previous October.

We renewed our insurance on 25th October 2022. The market for Insurance within our Industry is very small with no competition. There is only one provider in Ireland –it is a major issue within the Industry and has been highlighted at national level and DFI are lobbying the government and representative parties to get more competitive rates. Our Insurance premium in 2021/2022 was €20,515. In 2022 it increased €29,237.36.



# Finances and Annual Audited Accounts.

This is a continuous challenge, as we are still maintaining the same level of HSE funding even when our expenses have increased.

Our funding for 2022 as per the annual HSE Service level Agreement was €564,186.00 for Physical and Sensory services. We also continue to provide trained staff to Intellectual Disabilities services to cover weekend and at 2 centres under the management of the HSE Intellectual Disability services.

We continue to explore new opportunities for funding through provision of new services or through grant applications for specific projects or services .

LAPWD continually strives to strengthen and make more transparent our financial policies and reporting.



# Donations

Leitrim Association of People With Disabilities (LAPWD) would like to sincerely thank Tony and Bernadette McGovern of McGovern Brothers (Haulage) Ltd, in association with The Leitrim Association in London for their generous donation of £2,000.

This donation helps provide services for people with physical and sensory disabilities all over County Leitrim.

We were also contacted by a donor who donated €7,000 to LAPWD, he wished to remain an anonymous donor. He would like it acknowledged, that the donation was from an expatriate with a deep love for his native Leitrim and the people of Leitrim.



# Staff

Overall In 2022 LAPWD had 55 employees on the company payroll, this figure includes office staff and management. PA recruitment continues to be a challenge and staff retention is always a concern for us as a S39 Agency.

We are incredibly fortunate to maintain the same staff over the past number of years. Many of our employees have been with the company over 10 years and a couple have been with the company since its inception.

Nikki Mullen left LAPWD on 13th July 2022. Nikki has completed an EMT qualification and has secured full time work with LifeLine Ambulance. We certainly miss Nikki and wish her the very best for her exciting future career

## Retirement

Patricia Bohan retired as a PA in 2022 after many years of service .Patricia was an excellent employee and a great asset to our team. We wish her every happiness in her retirement.



# Staff

## Pandemic payment

The HSE identified Leitrim Association of People with Disabilities, as an employer of front line workers who were eligible for the Pandemic Special Recognition Payment (PSRP).

There were two tier payments, staff who worked under 22.5 hours per week received €600 and all other eligible employees received €1,000.

We were delighted that our staff were recognised for the work they continued to do throughout the pandemic.

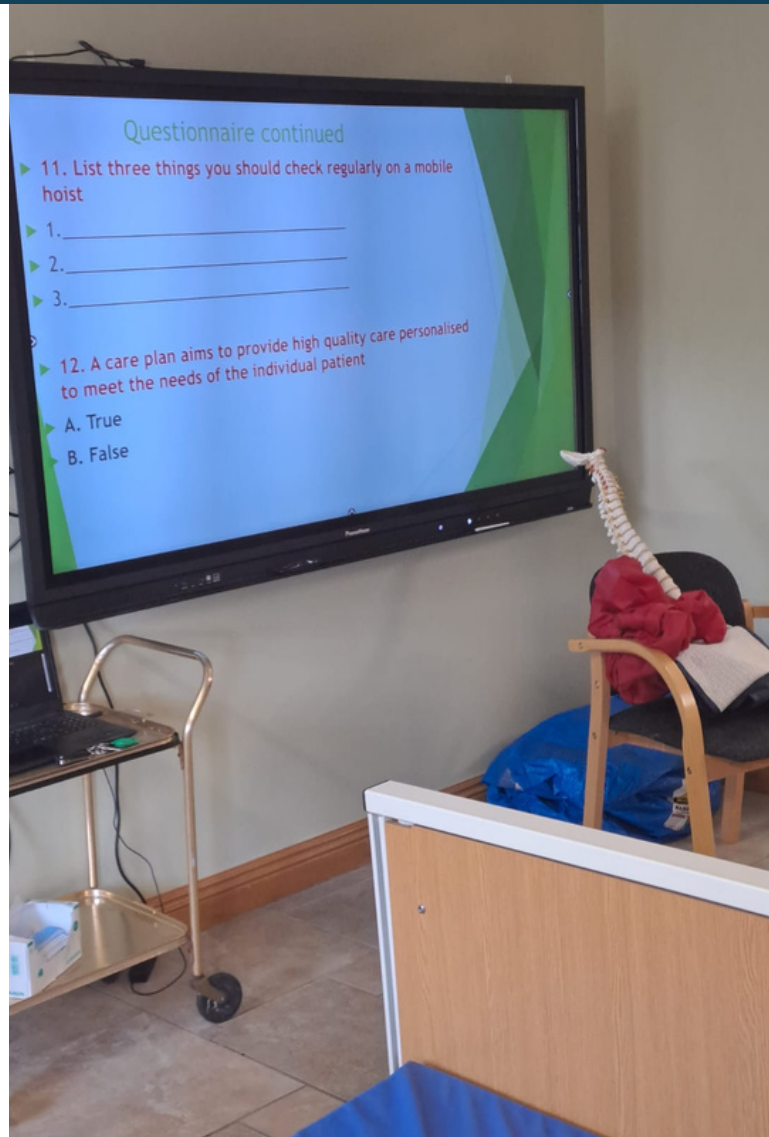


# Staff

## Mandatory Training

- Manual Handling
- Assisted Decision Making
- Safeguarding Vulnerable Adults
- Children First

Manager attended 4 weeks Governance, competency training facilitated by Liam Scollan.



Safeguarding of Vulnerable Adults

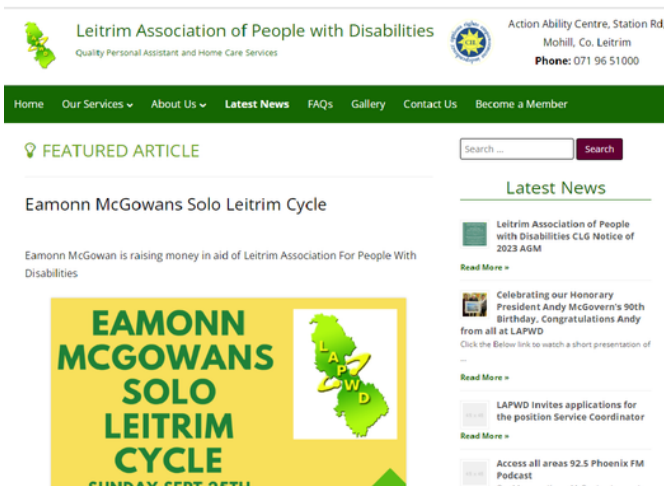
Children  
First



# Media and PR

Our main social media platforms are Facebook and our Website .The main aim of our social media platforms is to promote events and share information.

Our most used platform is our Facebook page with nearly 1,000 followers, this platform is one of the most effective way that LAPWD can keep everyone up to date with articles relating to disability and also events that are taking place within the LAPWD office. Our Facebook page also keeps our followers up to date of any job opportunities arising within the Company.



# Community Physiotherapy

The Community Physiotherapist has their clinic here on the ground floor of the LAPWD building. The clinic is open 3 days per week and proves a very valuable asset to the community.

The Physiotherapist can be contacted directly on 071 96 31128.



# Accessible Transport

Accessible transport supports people with disabilities to attend appointments and social events .

Our transport service has been extremely busy in 2022. Our accessible vehicle service completed 200 trips in 2022, 70% of the trips were for medical appointments in Galway, Sligo and Dublin. The remaining 30% were supporting people with disabilities access social events.

Special thanks to Gary Boyne for maintaining the vehicle so it can be in good condition each time it is used and also for being so patient and accommodating to all who use this service. If you are interested in booking the vehicle, please contact the office for available dates and times. (071-9651000)

Our service is a door to door assisted service matching individual need and is complimentary to the ethos of our organization in supporting Independent living.



# Funding Applications

Department of Rural and Community Development, confirmed our grant award of €12,675.13 under the Community Centres Investment Fund. This funding will be put towards our new front and back doors to improve the energy efficiency of the building.



We were approved for the Energeia, Get Ireland Growing Fund. We received seed packs and a new planting table for our sensory Garden. We also facilitated a workshop on planting seeds, which was held onsite.



We were approved for funding through Age and Opportunity fund to run a 6 week yoga class, held here in the Action Ability Centre.



## Weaving Connections in our Community

LAPWD were delighted to secure funding with Leitrim Co Council under the Creative Ireland call and to offer a Weaving Connections in our Community 2022 project to all our Leaders, PAS, and members.

The Project aim was to bring people together, integrating, reconnecting, and establishing bonds and friendships in our community.

The project involved 5 practical workshops to weave a range of functional and practical garden and household items culminating with a Community Workshop / Exhibition / Talk and Demonstration at which the public will be invited to view the range of Willow Baskets created.

Workshops were held every Tuesday in our Action Ability Centre.

**LAPWD CHAIR YOGA**  
Starting 6th Sept  
5 week course  
11 am  
Action Ability Center  
Station Rd  
Mohill  
to book contact  
0719651000



# Funding Applications

Here is a snap shot of the Ladies in action over the weeks .The Ladies participated in our wonderful Weaving Connections in our Community project. The Project ran for 6 weeks , participants from our community came together with a shared interest and common goal to learn about growing and harvesting willow as they were guided through the processes and techniques of this ancient craft.

The element of having a common interest and goal is key to bringing people together, integrating, reconnecting and establishing bonds and friendships in our community. The Ladies had a brilliant 6 weeks of fun and creativity . This project was funded Creative Ireland Leitrim Open Call and we wish to thank Leitrim county council and creative Ireland for their support .



# Make Way Day

September 30th was Make Way Day.



As always, our aim is to educate and raise awareness of the needs of people with disabilities in the public spaces we all share.

Make Way Day is about one impactful, coordinated, and decisive day of action to improve the access of our towns and cities for everyone. LAPWD played their part in this important event.

## Climb with Charlie

On Saturday April 2nd, Charlie Bird climbed Croagh Patrick in aid of the Irish Motor Neurone Disease Association and Pieta House.

Due to Charlie's Motor Neurone Disease diagnosis, the climb was an immense challenge but he was determined to do it to highlight the vast mountains so many people have to climb in their everyday lives due to severe illness, physical and mental.

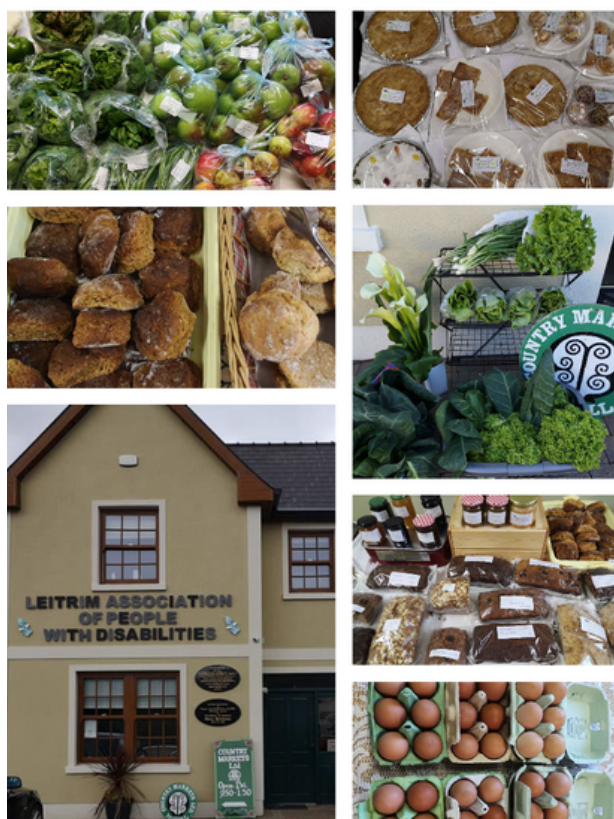
The campaign encouraged everyone to 'Climb With Charlie' and the LAPWD office staff played their part in the campaign. They climbed Sheemore and donated to the campaign. This campaign is obviously very close to our hearts, as our Honorary President Andy McGovern was diagnosed with Motor Neurone Disease at the age of 43.



# County Market

We were so delighted that following COVID restrictions, the Country Market returned on a Friday morning. The Market is a great social community event every Friday morning from 9 till 1. All are welcome to pop in for tea and a chat ,certainly brings the LAPWD Building to life.

## COUNTRY MARKET



# Leitrim GAA

The manager attended the launch of a publication on Facilities for People With Disabilities on 13th October . The book was launched by the Sports Minister Mr Jack Chambers in the Centre of Excellence Annaduff.

This is a very positive step for all members of the GAA, promoting access and inclusion for all. As an organisation we fully support this initiative.



# Fundraising

2022 was a very busy year for fundraising in LAPWD. We had two significant fundraising events in June and September.

## LAPWD RUN WALK ROLL 2022

Our Annual fun, run, roll or stroll was held on Sunday 12th June 2022. Thank you to all who helped out in any way on the day, An Garda Siochana, Stewards and volunteers .

Maura and Gene Baxter from Baxter's Centra Mohill for refreshments. Michelle Fanning from Leitrim Sports Partnership for her energetic warm up and to Keith Beirne from Leitrim & Mohill GAA for kicking off the race.

We are extremely grateful to all the people who made donations. This year we raised just over €1000 .All funds raised will support LAPWD to continue to support Independent Living for people throughout of all county Leitrim and West Cavan.

Thank you to Leitrim County Council for their sponsorship #enjoyleitrim. Special thanks to Terry Williams for taking photos which captured the day so wonderfully.



# Eamonn McGowans Solo Leitrim Cycle

On the 25th of September, Eamonn McGowan completed a Solo Leitrim Cycle. On the day, he cycled 100 kilometers throughout Leitrim.

Starting in his hometown of Drumshanbo, moving on through the following towns/villages- Keshcarrigan, Fenagh, Ballinamore, Newtowngore, Carrigallen, Aughavas, Cloone, Mohill, Dromod, Annaduff, Drumsna, Jamestown, Carrick-On-Shannon, Leitrim Village and finished in Drumshanbo.





# Eamonn McGowans Solo Leitrim Cycle



Eamonn is a stalwart in volunteering and charity work. He is also a wonderful advocate for those with disabilities.

Eamonn is an inspiration to us all and raised over €5,000 for completing this one day event.

# Employment Support Project in association with Leitrim Development Company

On Tuesday, July 26 2022, Leitrim Development Company officially launched their new Employment Support project at The Dock, in Carrick-on-Shannon.

Leitrim Development Company (LDCo) is a community-led Local Development Company. They deliver a range of rural, social and economic programmes at local level across County Leitrim. They support communities, individuals and businesses to increase their economic sustainability and improve their quality of life.

## Employment Support

Guided by the internationally recognised principles of Individual Placement Support (IPS), LDCo Employment Support provides personalised employment supports for people with disabilities who are interested in employment.

Their dedicated Employment Specialist works with job seekers and employers to match job-ready candidates to vacancies.

For more information on Leitrim Development Company Employment Support, please contact [Mark@ldco.ie](mailto:Mark@ldco.ie), visit [ldco.ie](http://ldco.ie) or call 0719641770.



## Leitrim Development Company launch Employment Support project



Karen McPartland (Leitrim Association of People with Disabilities), Orla Blessing (Leitrim Volunteer Centre), Bernie Donoghue (Leitrim Dev Company), Mary McKeon (Leitrim Public



# Membership

Membership of LAPWD is open to everyone on the completion of Annual Membership form and payment of membership fee of €10. Family membership is €20. A copy of the Membership form is at the back of the report.

## Networking-Sharing Resource and Information

Throughout the year we take every opportunity to engage in joint working with as many public agencies and community groups as possible to bring benefits and opportunities to our members.

The bodies include Health Service Executive, Public Participation Network, Leitrim Development Company, Disability Federation of Ireland, Leitrim County Council etc. (please see list below)



# Conclusion

The Annual report is an important time of reflection, a time to recognise the wonderful services and opportunities that we provide throughout LAPWD, remembering always the Leaders who are at the core of our service and the Philosophy of Independent Living.

Everyone in the community is welcome to become member, all are welcome to our groups, courses and classes.

We are continually networking with other agencies, both local and national to keep us updated on the constant challenges the Disability Sector faces.

Going forward over the next year, we will strive to maintain our level of services and supports. Our Core Values remain the same, underpinned by the Philosophy of Independent Living and our activities are aimed towards promoting, Independence, Options, Rights and Empowerment.

As always, we extend our thanks for your commitment and interest in LAPWD and look forward to your continued support in the coming years. We hope you found the report to be a true reflection of our work throughout the year.

LAPWD again uses this opportunity to acknowledge and appreciate the Board of Directors, Core Office Staff & Staff in the community who strive every day to make this organisation the success that it is today.

Here's to another successful year for LAPWD. We look forward to the year ahead and we believe it can be a year of continued achievement and development.



# OUR OFFICE TEAM



Karen McPartland  
Manager



Bernie McGovern



Nikki Mullen



Gary Boyne



Theresa Duignan



Emer Clancy

# BOARD OF DIRECTORS



Bridget Mc Gourty



Eddie McGowan



Philip McTeigue



Peter Kearns



Terry Williams



Bernie Donoghue



Ita Reynolds Flynn



John Rooney



Anne Gilpin



# Leitrim Association of People with Disabilities CLG



• **CENTRE OF  
INDEPENDENT LIVING**

• **PROMOTING INDEPENDENT LIVING  
& EMPOWERING DISABLED  
PEOPLE THROUGHOUT LEITRIM**



071 965 1000  
086 380 5616



karen@lapwd.com  
www.lapwd.com



Action Ability Centre,  
Station Rd, Mohill ,  
Co Leitrim .N41X9T1

